

## INVESTMENT STRATEGY

SEPTEMBER 2021

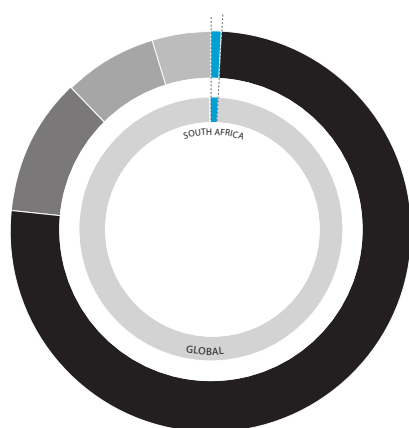
The objective of this portfolio is to provide investors with moderate capital growth. The portfolio aims to outperform a composite benchmark of equities and bonds. This portfolio maintains a medium risk profile and is limited to a maximum of 65% exposure to equities.

### RISK WEIGHTING



### MINIMUM INVESTMENT HORIZON (YEARS)

## ASSET ALLOCATION



Region	Percentage	Asset Class
South Africa	1,10%	Equity
Global	98,90%	Global Equity
		Global Property
		Global Bonds
		Global Cash

Asset allocation is one month lagged.

## UNDERLYING MANAGERS

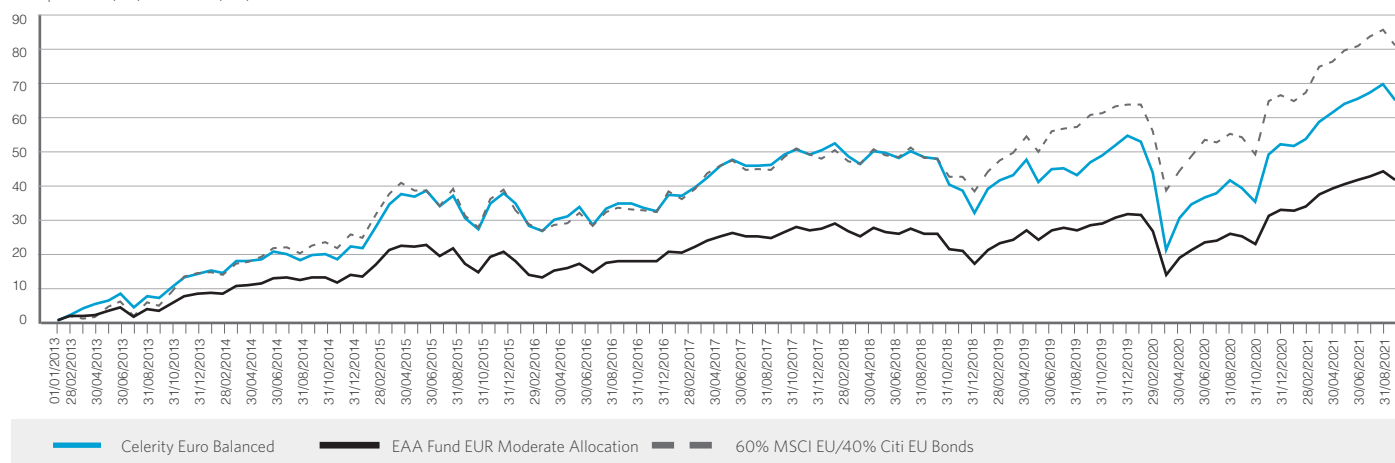
Blackrock Asset Management
Clearance Capital
Coronation Fund Managers
CRUX Asset Management
Orbis Investment Management
Rubrics Asset Management

## PORTFOLIO RETURNS % (ANNUALISED)\*

	YTD	1 Year	3 Years	5 Years
Celerity Euro Balanced	8,83	18,93	3,85	4,22
60% MSCI EU/40% Citi EU Bonds	8,86	17,81	7,09	6,47
EAA Fund EUR Moderate Allocation	6,74	13,47	4,02	3,78

## INVESTMENT RETURNS\*

Time period: 01/01/2013 to 30/09/2021



Please note: this factsheet is subject to a disclaimer.

**TOP TEN EQUITY HOLDINGS**

1. LEG Immobilien	6. Novo Nordisk
2. Vonovia	7. British American Tobacco
3. Alphabet	8. Schneider Electric
4. Novartis	9. Deutsche Wohnen
5. Prosus	10. SGS

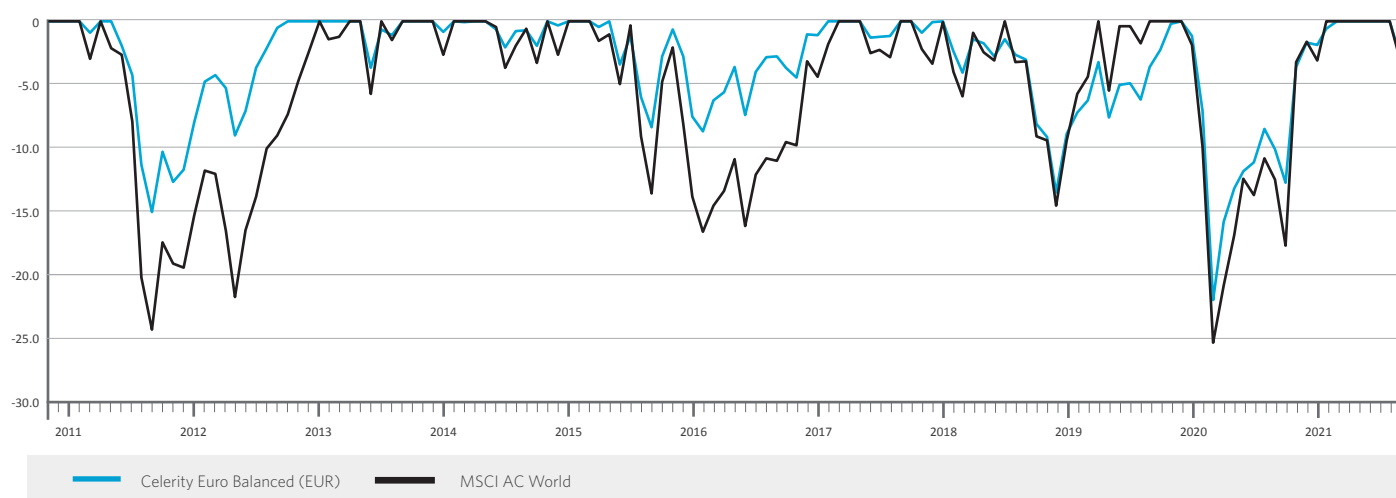
Top 10 equity exposures are one month lagged.

**TOTAL INVESTMENT MANAGEMENT CHARGES (VAT INCLUSIVE) \*\***

Investment Management (TER)	0,93%
Other - Discretionary Management fee - Celerity	0,35%

**DRAWDOWN\***

Time period: 01/12/2010 to 30/09/2021



**FUND MONTHLY RETURNS %\***

	Jan	Feb	Mar	Apr	May	Jun	Jul	Aug	Sep	Oct	Nov	Dec	Year
2021	-0,18	1,30	3,23	1,87	1,53	0,98	1,08	1,56	-2,77				8,83
2020	-1,15	-5,95	-16,02	7,90	3,10	1,52	0,86	2,90	-1,70	-2,92	10,37	1,99	-1,70
2019	5,30	1,82	1,06	3,23	-4,50	2,74	0,13	-1,36	2,74	1,44	2,07	1,74	17,31
2018	1,22	-2,41	-1,67	2,75	-0,35	-1,01	1,37	-1,24	-0,40	-5,19	-1,13	-4,79	-12,40
2017	-0,09	1,95	1,93	2,52	1,24	-1,29	0,09	0,07	2,24	0,92	-0,89	0,86	9,89

\* Returns prior to launch are simulated and based on the underlying funds at the initial weightings and are net of published asset manager fees. Returns thereafter are net of applicable asset manager fees. Returns greater than a year have been annualised.

\*\* Please note: the average weighted cost of underlying funds is indicative and varies daily as the weightings of the funds vary. The above-mentioned fees excludes Financial Advisor and platform fees and VAT.

The information and opinions contained in this document are recorded and expressed in good faith and in reliance on sources believed to be credible. No representation, warranty, undertaking or guarantee of whatever nature is given on the accuracy and/or completeness of such information or the correctness of such opinions. No guarantee of investment performance or capital protection should be inferred from any of the information contained in this document. Furthermore, Celerity does not act as the investor's financial advisor, they have not conducted a financial needs analysis and will rely on the needs analysis conducted by the investor's financial advisor. Celerity recommends that investor's and financial advisors take particular care to consider whether any information contained in this document is appropriate given the investor's objectives, financial situation and particular needs in view of the fact that there may be limitations on the appropriateness of any advice provided. No guarantee of investment performance or capital protection should be inferred from any of the information contained in this document.

Sources: Performance, Top 10 holdings and Asset Allocation is sourced from Morningstar Direct. CPI for all urban areas sourced from FactSet.