

### INVESTMENT STRATEGY

MARCH 2022

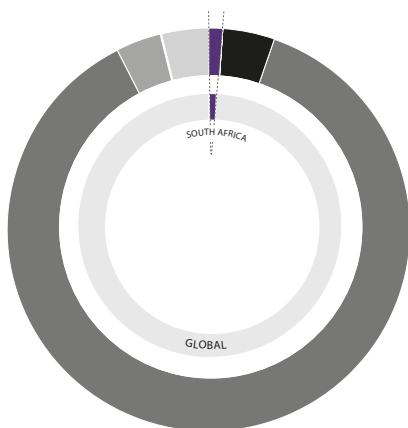
The portfolio seeks to provide investors with long term capital growth. It maintains a high risk profile and at least 80% of the portfolio's net asset value will be invested outside of South Africa, with no more than 80% exposure to assets of a specific geographical region. The portfolio has maximum flexibility to vary assets between various markets and asset classes to reflect the changing economic and market conditions.

#### RISK WEIGHTING



MINIMUM INVESTMENT HORIZON (YEARS)

### ASSET ALLOCATION



South Africa 1,35%		Global 98,65%	
1,31%	Cash	4,08%	Cash
0,03%	Equity	0,08%	Bonds
0,01%	Property	87,08%	Equity
		3,72%	Property
		3,69%	Africa

Asset allocation is one month lagged.

### TOP TEN UNDERLYING HOLDINGS

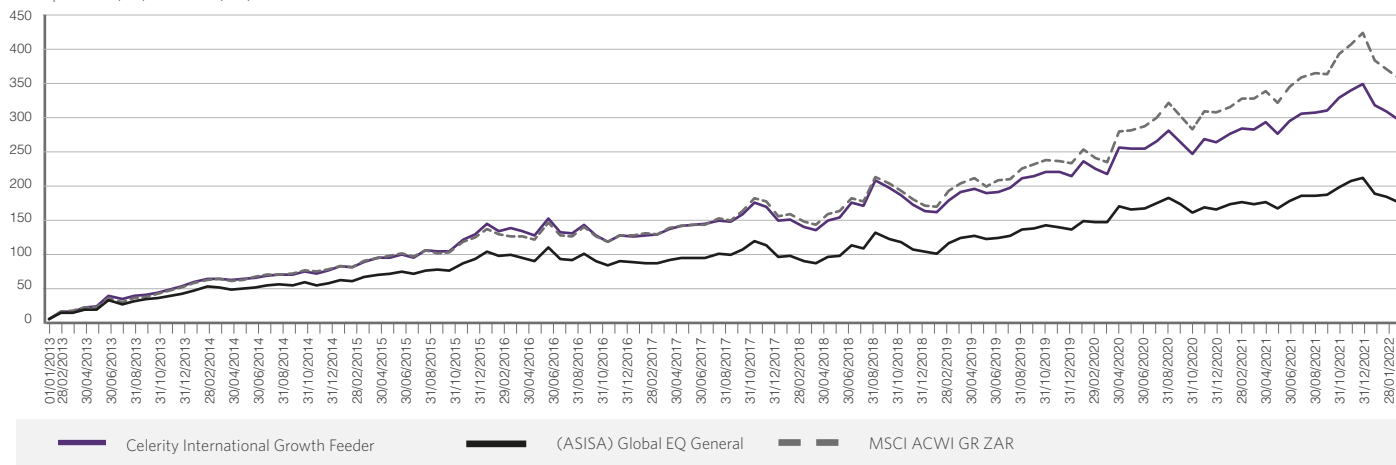
Dodge & Cox Worldwide Global Stock Fund
Merian World Equity Fund
CoreShares Total World ETF
Nedgroup Inv Global Equity Feeder Fund
Nedgroup Inv Global Emerging Markets Equity Feeder Fund
Ninety One GSF Global Franchise Fund
iShares MSCI World ETF
iShares MSCI ACWI ETF
Laurium Africa USD Bond Prescient Feeder Fund
iShares Core MSCI EAFE ETF

### PORTFOLIO RETURNS % (ANNUALISED)\*

	YTD	1 Year	3 Years	5 Years
Celerity International Growth (ZAR)	-12,23	3,59	11,06	11,01
MSCI ACWI GR (ZAR)	-13,26	6,61	14,80	14,15
(ASISA) Global MA Flexible (ZAR)	-12,38	0,21	7,16	7,64

### INVESTMENT RETURNS\*

Time period: 01/01/2013 to 31/03/2022



Please note: this factsheet is subject to a disclaimer.

**TOP TEN EQUITY EXPOSURES**

1. Microsoft Corporation	6. ASML Holding NV
2. Apple Inc.	7. Charter Communications Inc
3. Amazon.com, Inc.	8. Cvs Health Corp
4. Alphabet Inc. Class A	9. Alphabet Inc. Class C
5. Visa Inc. Class A	10. Taiwan Semiconductor Manufact Co Ltd

Top 10 equity exposures are one month lagged.

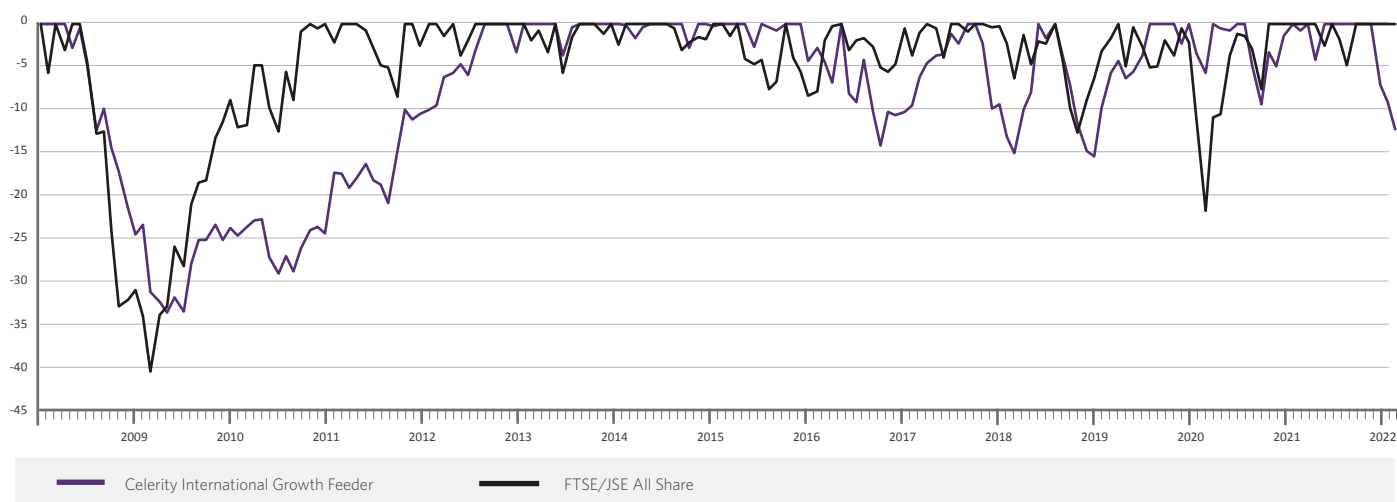
**TOTAL INVESTMENT MANAGEMENT CHARGES (VAT INCLUSIVE) \*\***

Total Expense Ratio (TER)	1.49%
Transactional Cost (TC)	0.06%
Total Investment Charge (TIC)	1.55%

Calculation Period: Inception to 31 Dec 2021.

**DRAWDOWN\***

Time period: 01/01/2008 to 31/03/2022



**FUND MONTHLY RETURNS %\***

	Jan	Feb	Mar	Apr	May	Jun	Jul	Aug	Sep	Oct	Nov	Dec	Year
2022	-7,07	-2,21	-3,41										-12,23
2021	3,61	2,34	-0,71	2,84	-4,09	4,84	2,87	0,46	0,54	4,65	2,71	2,19	24,26
2020	6,97	-3,39	-2,38	12,74	-0,46	-0,24	3,11	4,61	-4,79	-4,72	6,67	-1,66	15,92
2019	-0,84	6,77	4,43	1,54	-2,15	0,77	2,12	5,18	0,80	2,10	0,11	-2,19	19,81
2018	0,54	-4,19	-2,14	5,86	2,34	8,58	-1,56	13,84	-3,68	-3,46	-4,98	-3,47	5,98
2017	0,42	0,83	3,66	1,66	0,97	0,14	2,52	-1,20	4,96	6,52	-2,23	-7,74	10,22

\* Returns quoted are those of the target CIS portfolio from launch to date. All returns prior to launch date are simulated using the historic model portfolio returns, and are net of published asset manager fees. The returns are stitched together to simulate a longer period. Returns greater than a year have been annualised.

\*\* The Total Investment Charge (TIC) is the sum of Total Expense Ratio (TER) and Transaction Costs (TC), which indicates the percentage of the value of the portfolio which was incurred as costs relating to the investment of the portfolio.

Exposure to certain asset classes may be derived by using listed and unlisted derivatives, as permitted in the legislation, and not holding the physical asset. This document is an information sheet only and should be read in conjunction with the Minimum Disclosure Document (MDD), main deed and supplemental deed of the portfolio. The information and opinions contained in this document are recorded and expressed in good faith and in reliance on sources believed to be credible. No representation, warranty, undertaking or guarantee of whatever nature is given on the accuracy and/or completeness of such information or the correctness of such opinions. Celerity Investments (Pty) Ltd ("Celerity") will have no liability of whatever nature and however arising in respect of any claim, damages, loss or expenses suffered directly or indirectly by the investor or the investor's financial advisor acting on the information contained in this document. Furthermore, Celerity does not act as the investor's financial advisor, they have not conducted a financial needs analysis and will rely on the needs analysis conducted by the investor's financial advisor. Celerity recommends that investor's and financial advisors take particular care to consider whether any information contained in this document is appropriate given the investor's objectives, financial situation and particular needs in view of the fact that there may be limitations on the appropriateness of any advice provided. No guarantee of investment performance or capital protection should be inferred from any of the information contained in this document. The value of participatory interests may go down as well as up and past performance is not necessarily a guide to future performance.

Sources: Performance is sourced from Morningstar Direct. CPI for all urban areas sourced from FactSet. Top 10 exposures are sourced from GIRSA. Asset Allocation data compiled by Analytics Consulting.